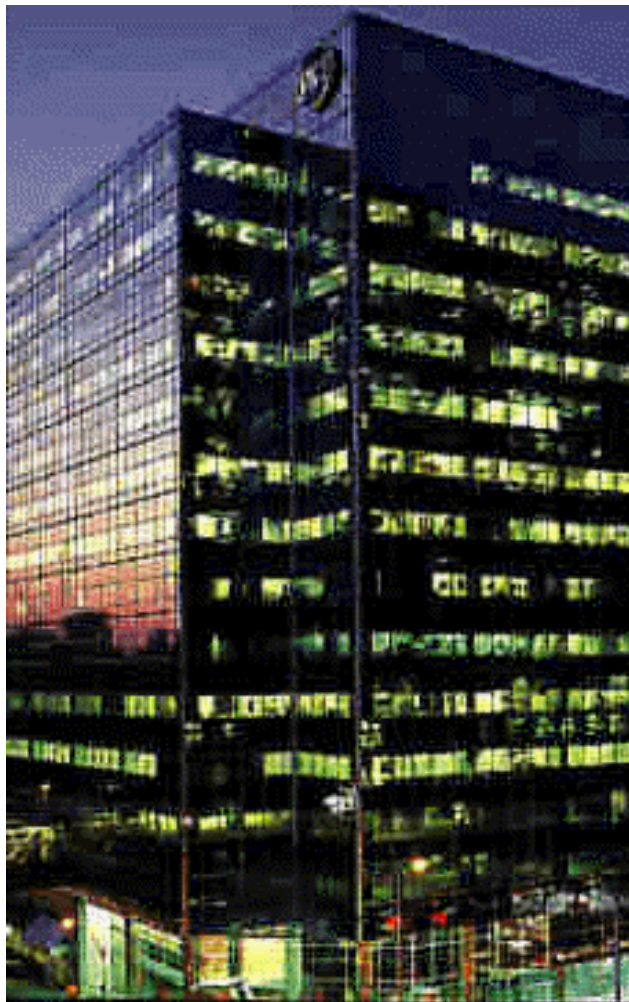


**Thermographic Inspection Report
at
160 Bloor Street West**

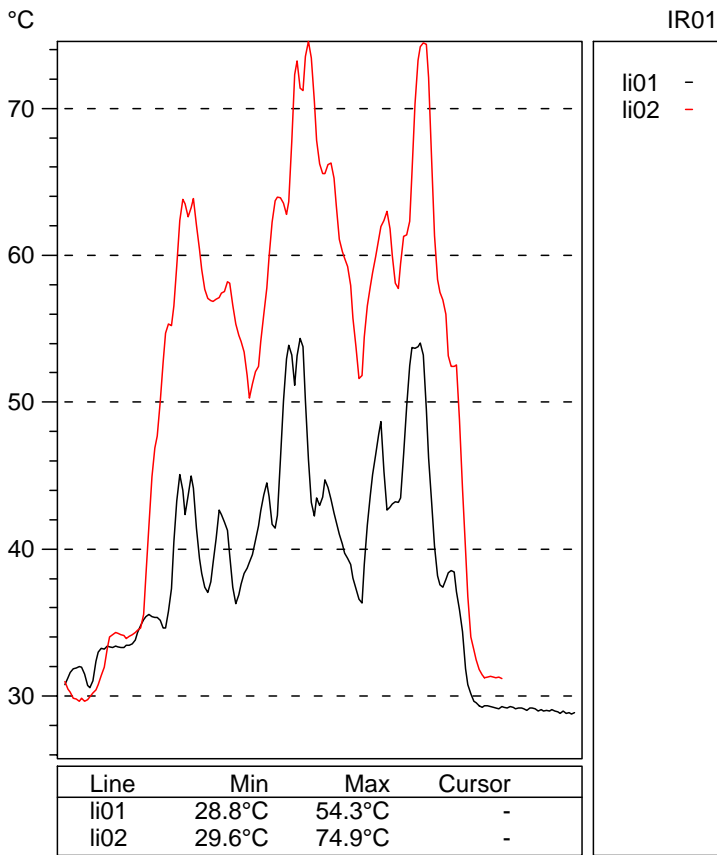
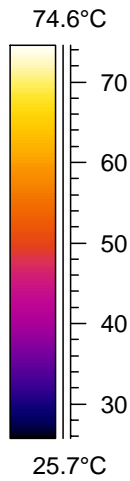
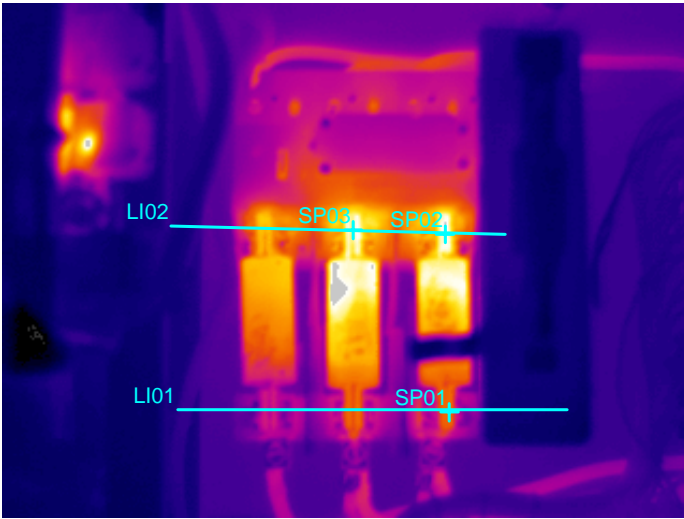
for

Oxford Properties
July 2004



Operator Robert Koestner

EQUIPMENT	LOCATION	DATE
In Item #04335 100Amp Starter Supply Fan #1	160 Bloor Street West 16th Floor Refrigeration Room	July 6, 2004



IR information	Value
Date of creation	7/6/2004
Time of creation	1:06:46 PM
Object parameter	Value
Emissivity	0.95
Object distance	1.5 m
Ambient temperature	25.0°C
Atmospheric temperature	20.0°C
Transmission	0.99
Label	Value
IR : max	77.7°C
IR : min	25.6°C
SP01	54.0°C
SP02	73.9°C
SP03	71.2°C
LI01 : max	54.3°C
LI01 : min	28.8°C
LI02 : max	74.9°C
LI02 : min	29.6°C

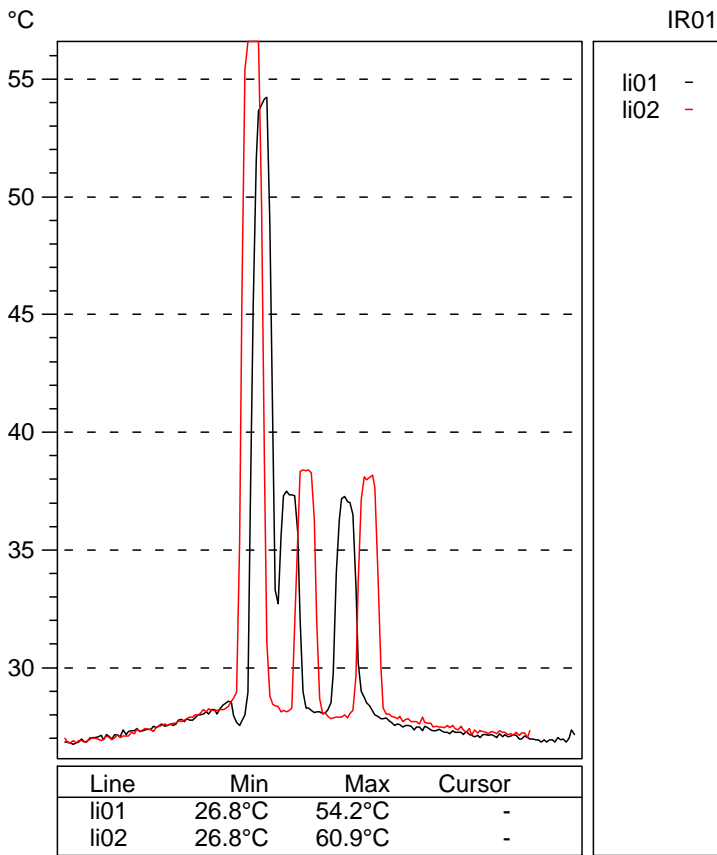
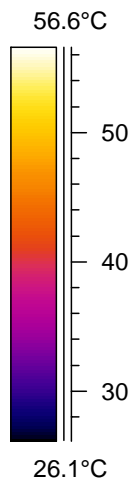
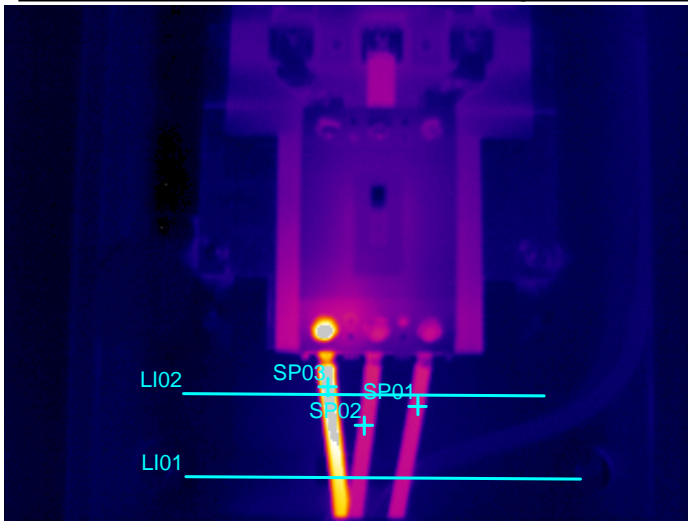
DESCRIPTION

Fuse clips are still hot on Line Side. Phase 'A' 37.2amps, Phase 'B' 33.9amps Phase 'C' 35.2amps

RECOMMENDATION

Replace Starter.

EQUIPMENT	LOCATION	DATE
Item # 04226 42 CCT 150 Amp Panel 11-LA	160 Bloor Street West 11th Floor Freight Elevator Electrical Room	July 7, 2004



IR information	Value
Date of creation	7/7/2004
Time of creation	11:27:25 AM
Object parameter	Value
Emissivity	0.95
Object distance	1.5 m
Ambient temperature	25.0°C
Atmospheric temperature	20.0°C
Transmission	0.99
Label	Value
IR : max	65.1°C
IR : min	26.1°C
SP01	37.9°C
SP02	38.0°C
SP03	61.6°C
LI01 : max	54.2°C
LI01 : min	26.8°C
LI02 : max	60.9°C
LI02 : min	26.8°C

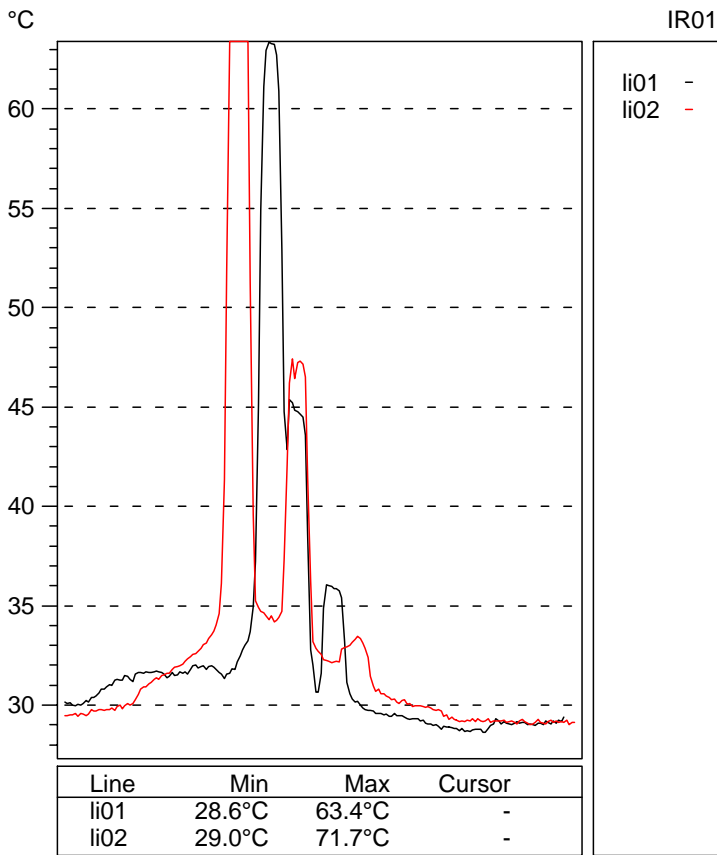
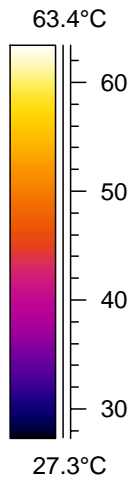
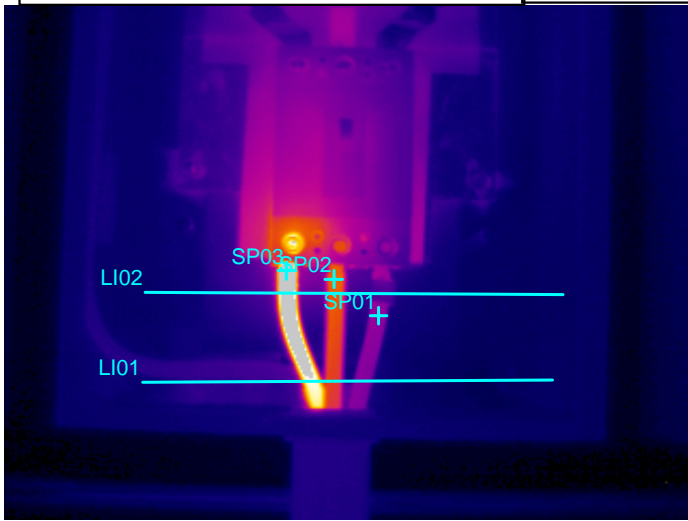
DESCRIPTION

High heat on Phase 'A' of main breaker line side lug. Phase 'A' 50.4amps, Phase 'B' 50.3amps
Phase 'C' 74.3 amps

RECOMMENDATION

Replace breaker lug and breaker lug screw.

EQUIPMENT	LOCATION	DATE
Item #04165 8LA 150Amp 42CCT Pnl Main Breaker	160 Bloor Street West 8th Floor Freight Elevator	July 7, 2004



IR information	Value
Date of creation	7/7/2004
Time of creation	11:59:30 AM
Object parameter	Value
Emissivity	0.95
Object distance	1.5 m
Ambient temperature	25.0°C
Atmospheric temperature	20.0°C
Transmission	0.99
Label	Value
IR : max	77.9°C
IR : min	27.3°C
SP01	36.5°C
SP02	48.2°C
SP03	77.9°C
LI01 : max	63.4°C
LI01 : min	28.6°C
LI02 : max	71.7°C
LI02 : min	29.0°C

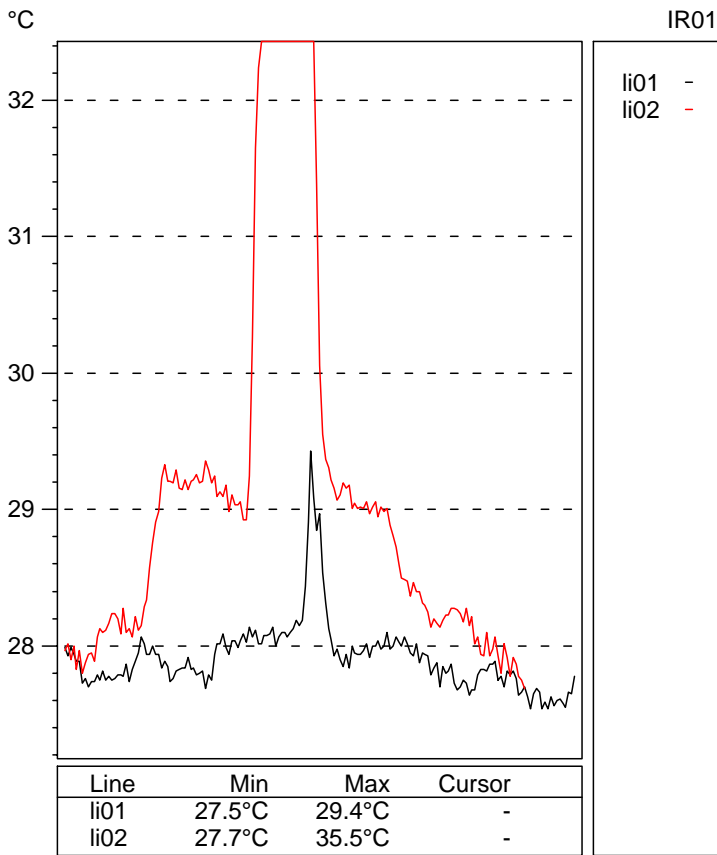
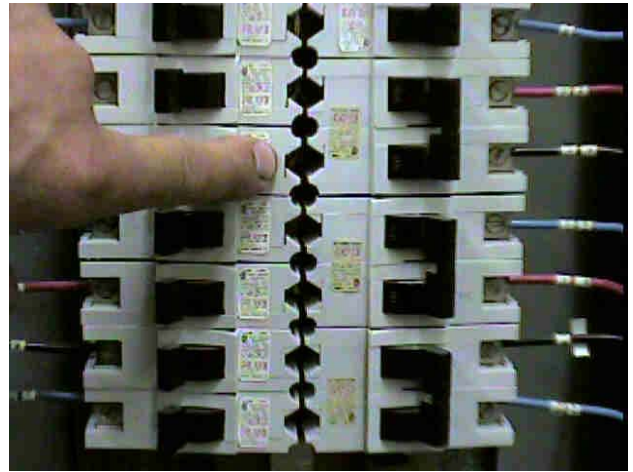
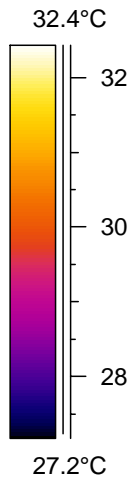
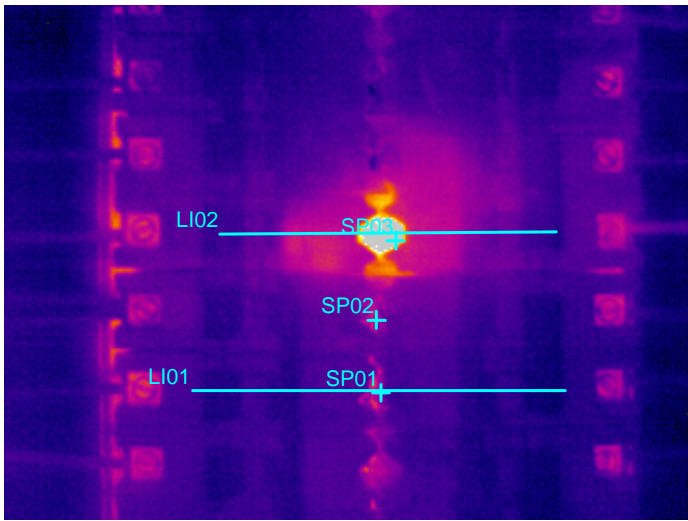
DESCRIPTION

High heat on Phase 'A' - Phase 'A' 34.5amps, Phase 'B' 44.8amps, Phase 'C' 39.4amps

RECOMMENDATION

Check Lug - Replace if necessary.

EQUIPMENT	LOCATION	DATE
Item # 04148 Panel 7RC 2 Pole 15Amp Breaker CCT 32/34	160 Bloor Street 7th Floor Washroom Side	July 7, 2004



IR information	Value
Date of creation	7/7/2004
Time of creation	12:58:29 PM
Object parameter	Value
Emissivity	0.95
Object distance	1.5 m
Ambient temperature	25.0°C
Atmospheric temperature	20.0°C
Transmission	0.99
Label	Value
IR : max	38.1°C
IR : min	27.1°C
SP01	28.8°C
SP02	28.8°C
SP03	37.0°C
LI01 : max	29.4°C
LI01 : min	27.5°C
LI02 : max	35.5°C
LI02 : min	27.7°C

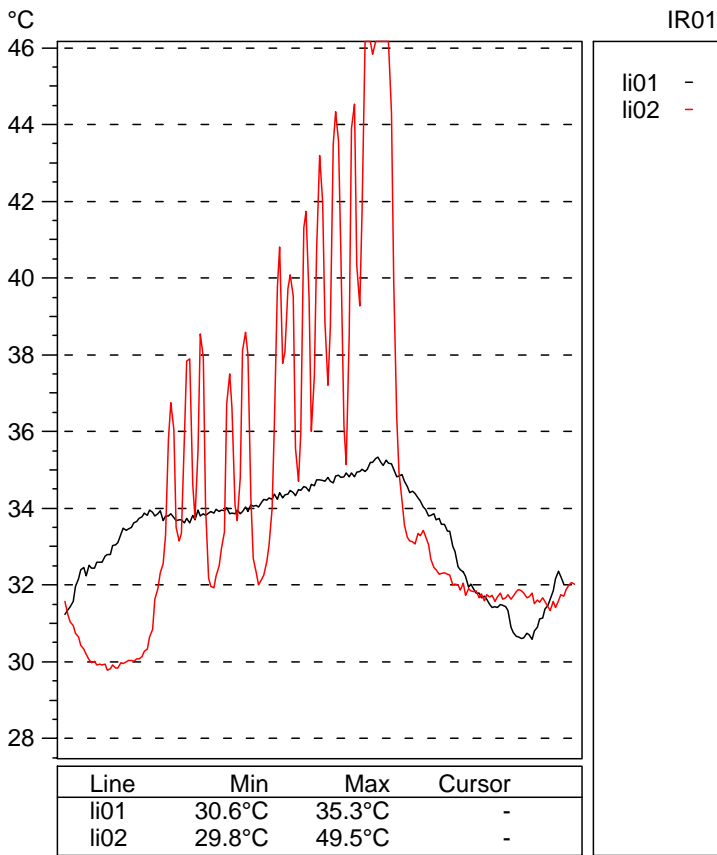
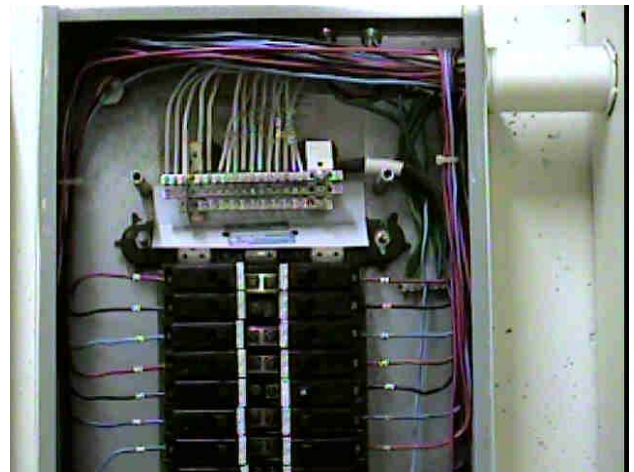
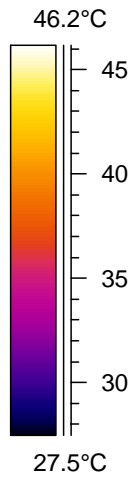
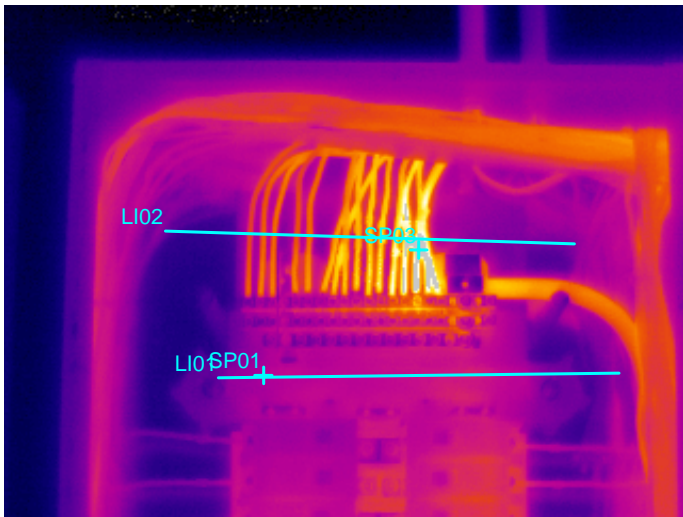
DESCRIPTION

Loose breaker bus screw. Can not tighten. CCT 32 - 0.2 Amps CCT 34 2.7 Amps

RECOMMENDATION

Replace breaker and check bus.

EQUIPMENT	LOCATION	DATE
Item # 4114 42 CCT 150Amp Panel	6th Floor Freight Elevator Room	July 7, 2004



IR information	Value
Date of creation	7/7/2004
Time of creation	1:07:19 PM
Object parameter	Value
Emissivity	0.95
Object distance	1.5 m
Ambient temperature	25.0°C
Atmospheric temperature	20.0°C
Transmission	0.99
Label	Value
IR : max	50.5°C
IR : min	27.4°C
SP03	49.8°C
SP01	33.3°C
LI01 : max	35.3°C
LI01 : min	30.6°C
LI02 : max	49.5°C
LI02 : min	29.8°C

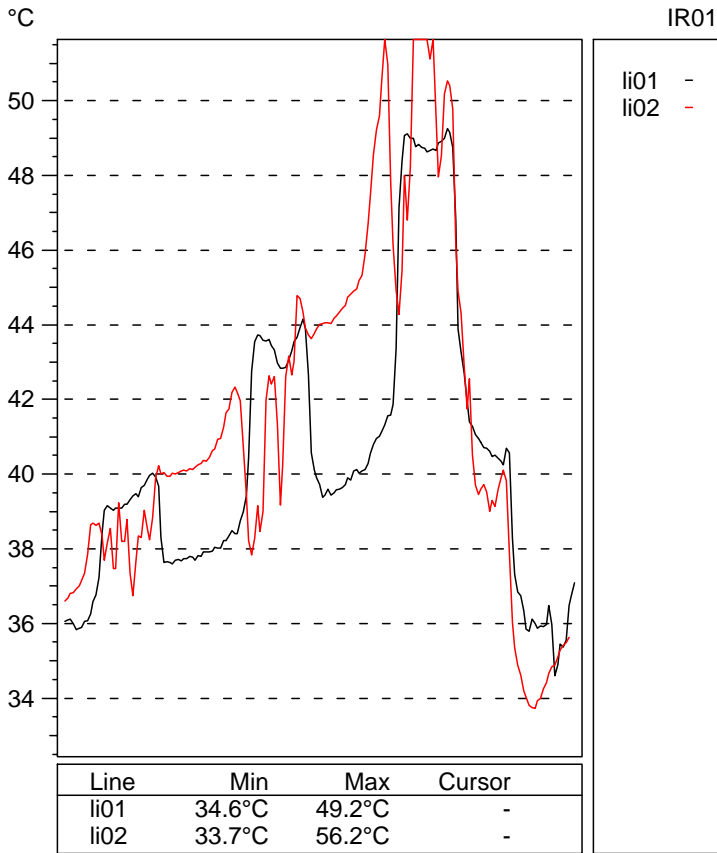
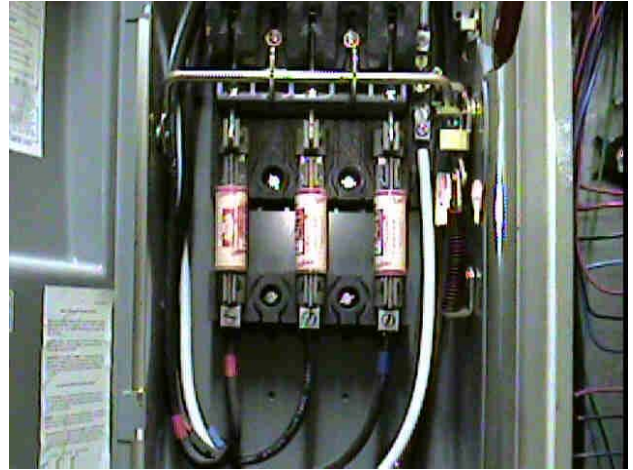
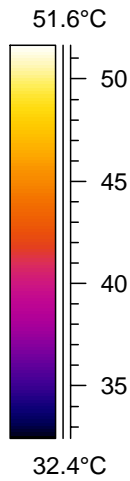
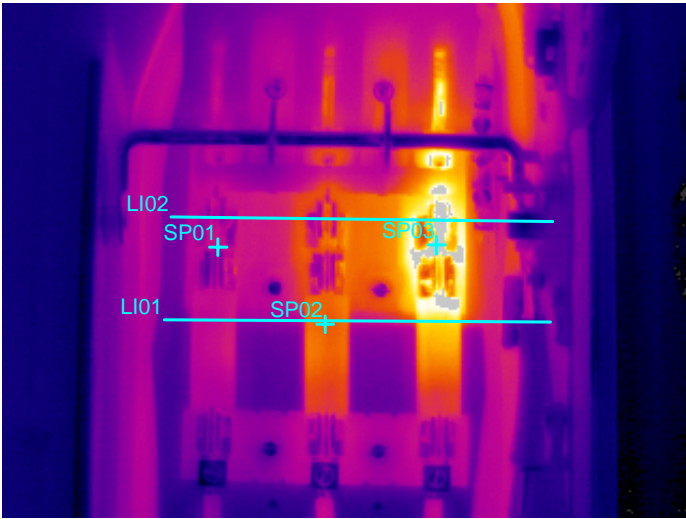
DESCRIPTION

High heat showing in neutral wires. Phase A 56.2A Phase B 63.2A Phase 'C' 88.2A, Neutral 30.1 A.

RECOMMENDATION

Tighten Lug - replace if necessary.

EQUIPMENT	LOCATION	DATE
Item # 4075 100Amp Fused Disconnect 4-RC	160 Bloor Street West 4th Floor Freight Elevator	July 7, 2004



IR information	Value
Date of creation	7/7/2004
Time of creation	1:23:36 PM
Object parameter	Value
Emissivity	0.95
Object distance	1.5 m
Ambient temperature	25.0°C
Atmospheric temperature	20.0°C
Transmission	0.99
Label	Value
IR : max	59.0°C
IR : min	32.2°C
SP01	39.5°C
SP02	43.2°C
SP03	57.6°C
LI01 : max	49.2°C
LI01 : min	34.6°C
LI02 : max	56.2°C
LI02 : min	33.7°C

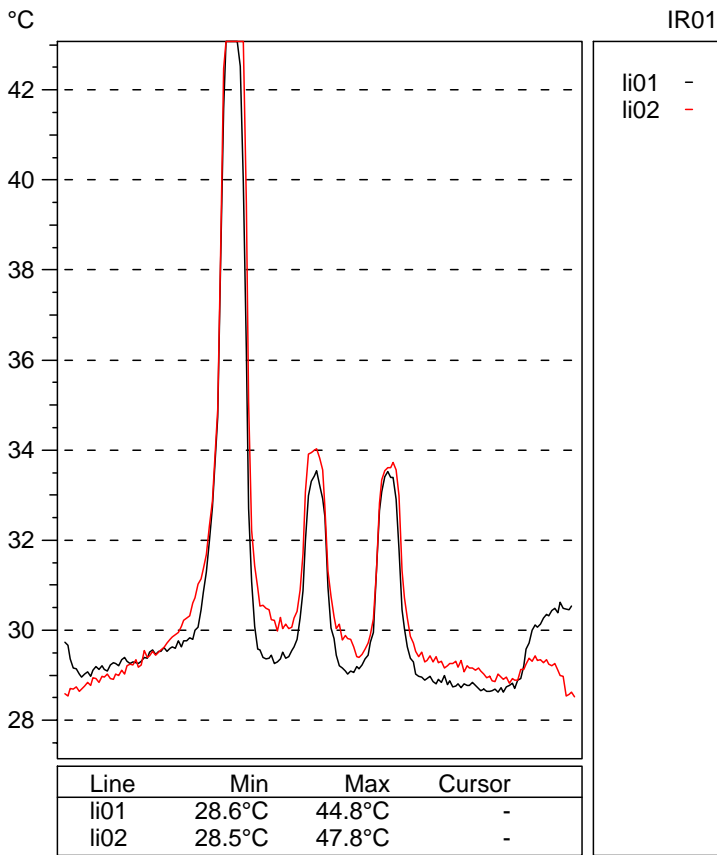
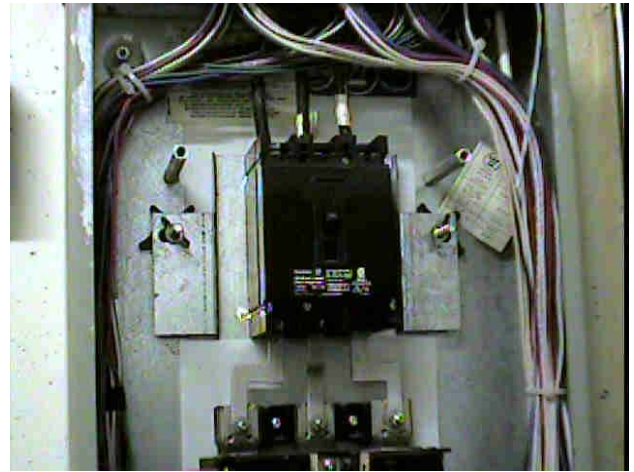
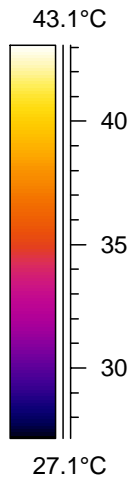
DESCRIPTION

High Heat readings on Phase 'C' clip - Phase 'A' 32.3 amps, Phase 'B' 27.3 amps, Phase 'C' 35.6 amps

RECOMMENDATION

Check knife blades and fuse clip - clean and tighten. Replace if necessary.

EQUIPMENT	LOCATION	DATE
Item # 4030 - 42 CCT Panel 2RB - 100A Main Breaker	160 Bloor Street West 2nd Floor Washroom	July 7, 2004



IR information	Value
Date of creation	7/7/2004
Time of creation	1:45:31 PM
Object parameter	Value
Emissivity	0.95
Object distance	1.5 m
Ambient temperature	25.0°C
Atmospheric temperature	20.0°C
Transmission	0.99
Label	Value
IR : max	48.2°C
IR : min	27.0°C
SP02	34.0°C
SP03	33.4°C
SP04	47.0°C
LI01 : max	44.8°C
LI01 : min	28.6°C
LI02 : max	47.8°C
LI02 : min	28.5°C

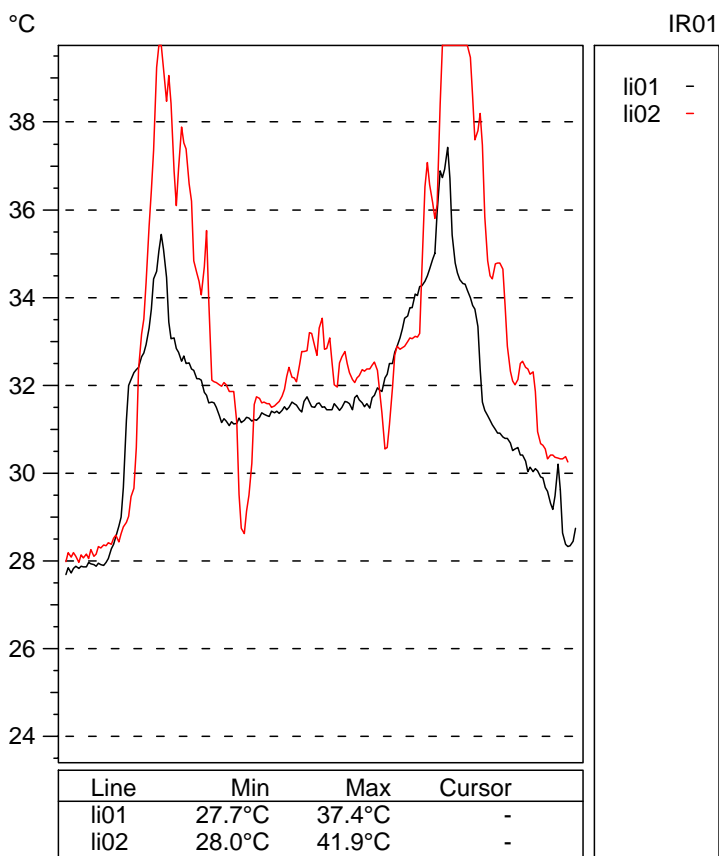
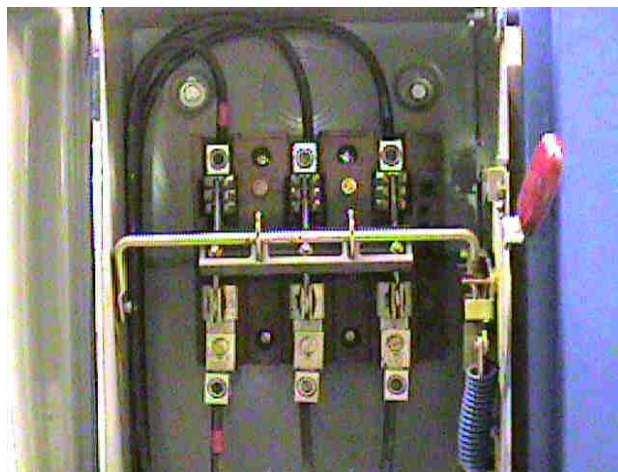
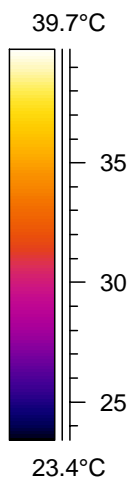
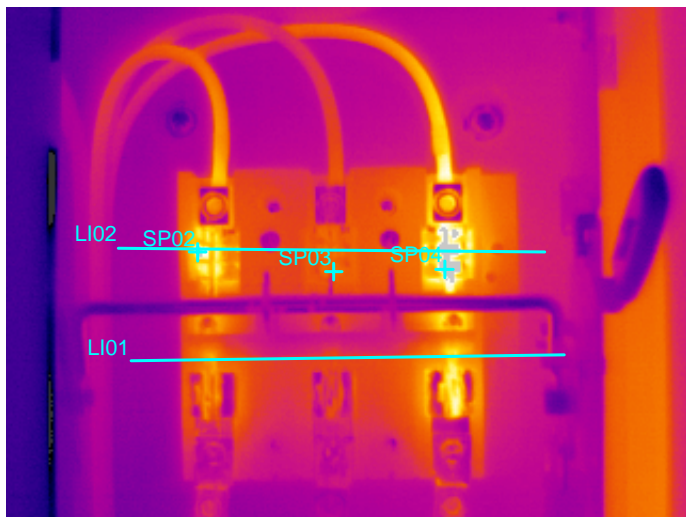
DESCRIPTION

High heat in main breaker lug line side. Phase 'A' 16.7amps, Phase 'B' 2amps, Phase 'C' 7amps.

RECOMMENDATION

Clean and tighten lug - replace if necessary.

EQUIPMENT	LOCATION	DATE
Item # 4384 200Amp N/F Disc.Elevator 7	160 Bloor Street West 17th floor Elevator Room	July 7, 2004



IR information	Value
Date of creation	7/7/2004
Time of creation	2:15:03 PM
Object parameter	Value
Emissivity	0.95
Object distance	1.5 m
Ambient temperature	25.0°C
Atmospheric temperature	20.0°C
Transmission	0.99
Label	Value
IR : max	42.3°C
IR : min	21.1°C
SP02	41.0°C
SP03	32.7°C
SP04	42.0°C
LI01 : max	37.4°C
LI01 : min	27.7°C
LI02 : max	41.9°C
LI02 : min	28.0°C

DESCRIPTION

High heat on 'C' Phase knife blade. Phase 'A' 19Amps, Phase 'B' 19Amps, Phase 'C' 19Amps

RECOMMENDATION

Clean and tighten blades - replace switch if necessary.