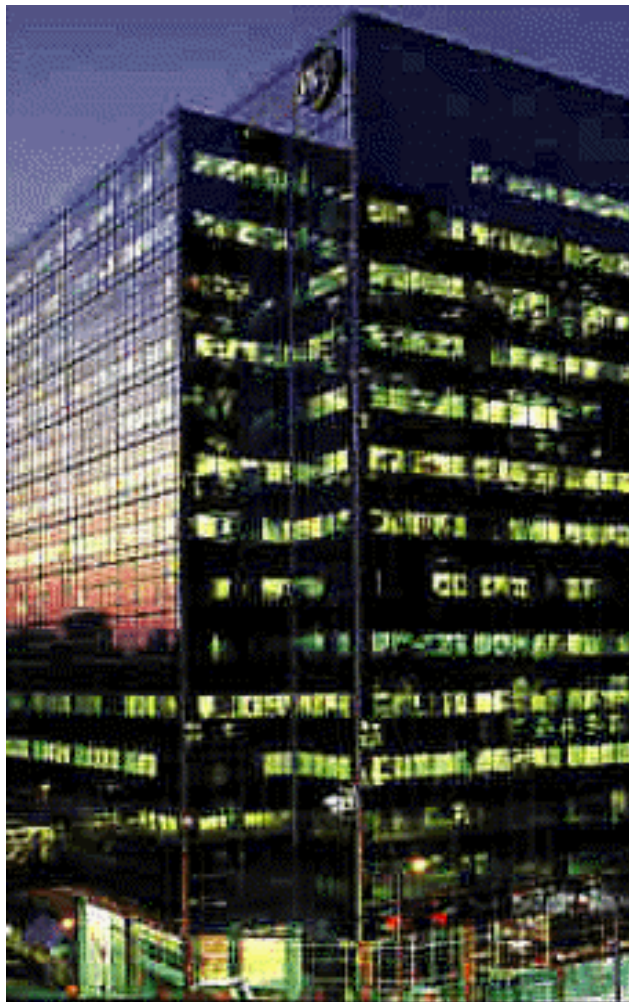


**Thermographic Inspection Report  
at  
160 Bloor Street West**

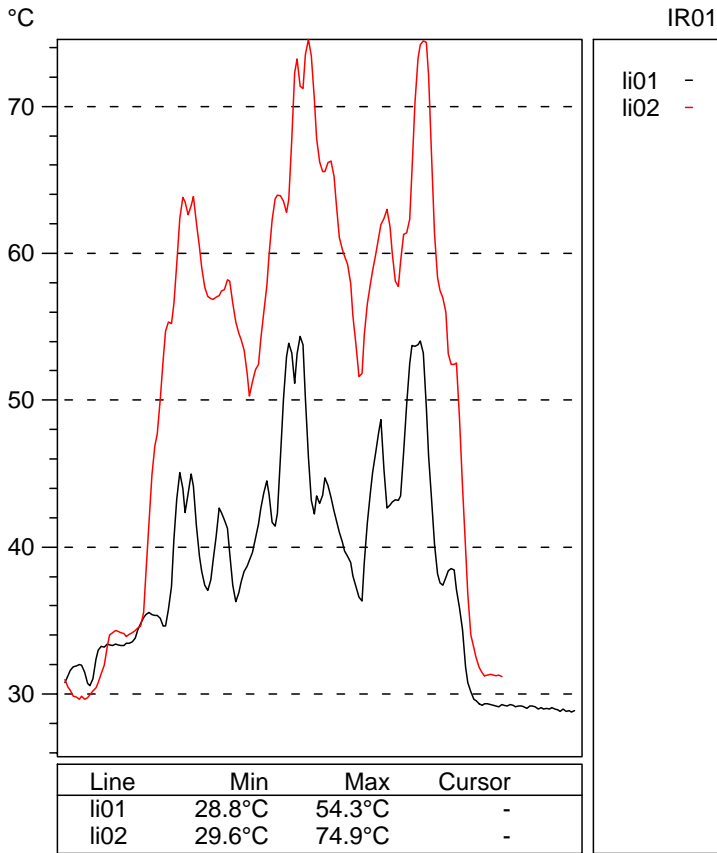
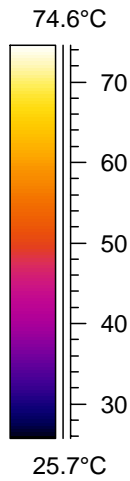
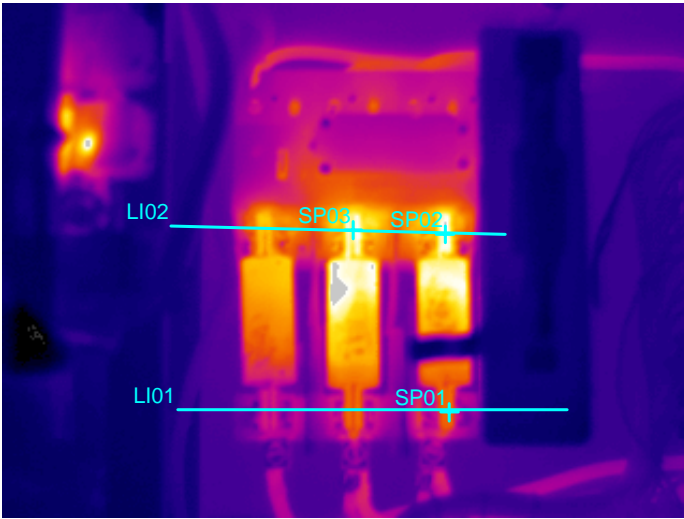
*for*

**Oxford Properties**  
July 2004



Operator Robert Koestner

EQUIPMENT	LOCATION	DATE
In Item #04335 100Amp Starter Supply Fan #1	160 Bloor Street West 16th Floor Refrigeration Room	July 6, 2004



IR information	Value
Date of creation	7/6/2004
Time of creation	1:06:46 PM
Object parameter	Value
Emissivity	0.95
Object distance	1.5 m
Ambient temperature	25.0°C
Atmospheric temperature	20.0°C
Transmission	0.99
Label	Value
IR : max	77.7°C
IR : min	25.6°C
SP01	54.0°C
SP02	73.9°C
SP03	71.2°C
LI01 : max	54.3°C
LI01 : min	28.8°C
LI02 : max	74.9°C
LI02 : min	29.6°C

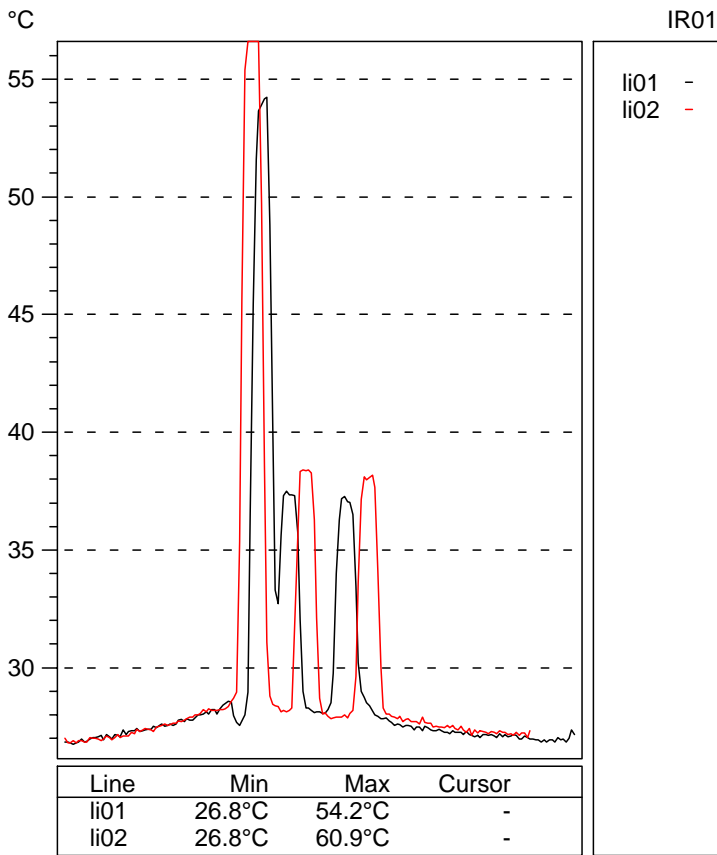
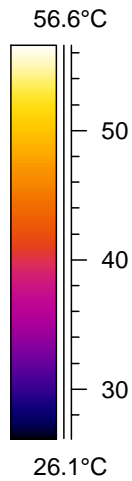
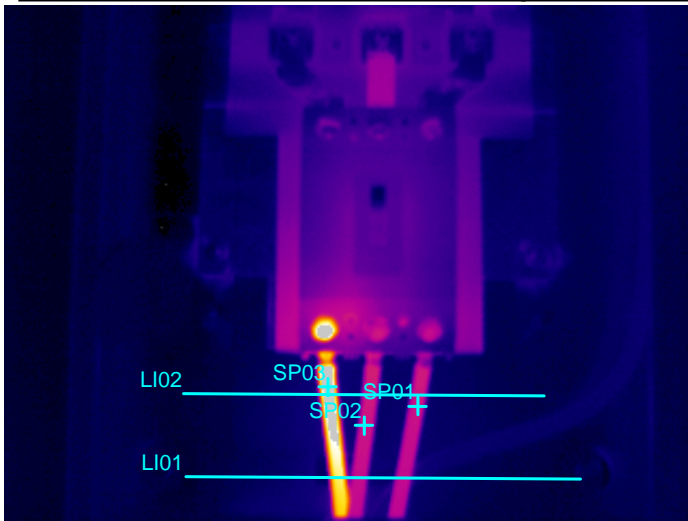
## DESCRIPTION

Fuse clips are still hot on Line Side. Phase 'A' 37.2amps, Phase 'B' 33.9amps Phase 'C' 35.2amps

## RECOMMENDATION

Replace Starter.

EQUIPMENT	LOCATION	DATE
Item # 04226 42 CCT 150 Amp Panel 11-LA	160 Bloor Street West 11th Floor Freight Elevator Electrical Room	July 7, 2004



IR information	Value
Date of creation	7/7/2004
Time of creation	11:27:25 AM
Object parameter	Value
Emissivity	0.95
Object distance	1.5 m
Ambient temperature	25.0°C
Atmospheric temperature	20.0°C
Transmission	0.99
Label	Value
IR : max	65.1°C
IR : min	26.1°C
SP01	37.9°C
SP02	38.0°C
SP03	61.6°C
LI01 : max	54.2°C
LI01 : min	26.8°C
LI02 : max	60.9°C
LI02 : min	26.8°C

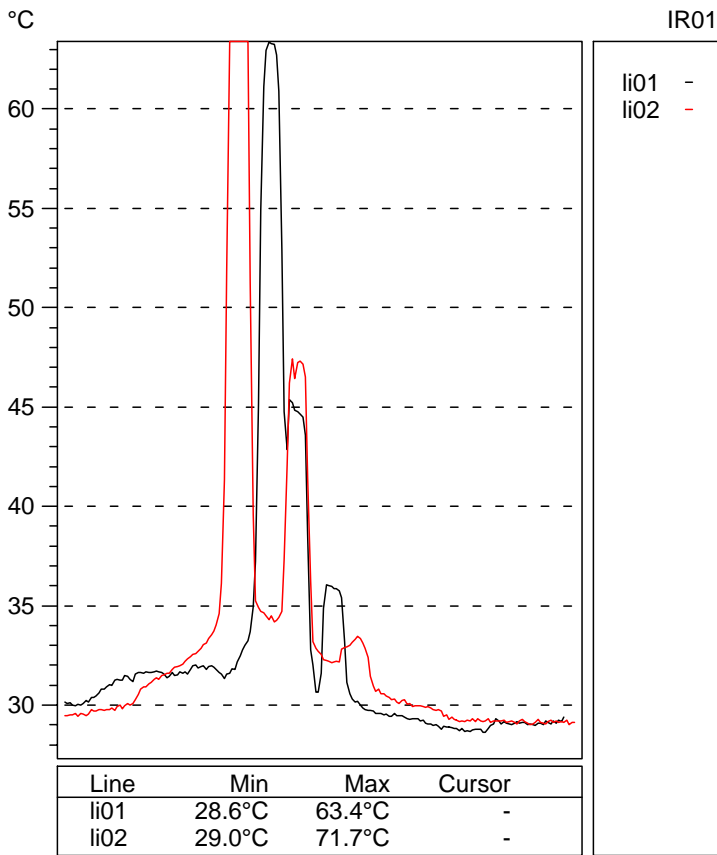
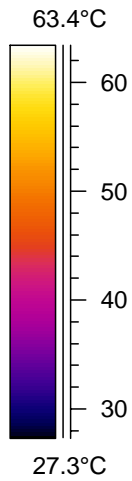
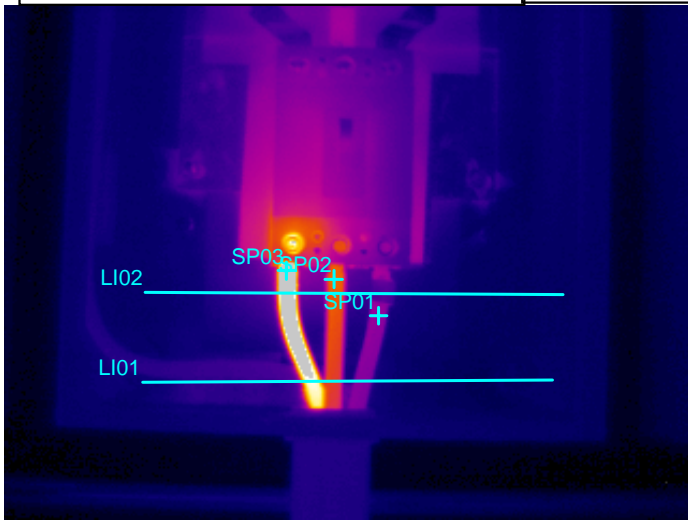
## DESCRIPTION

High heat on Phase 'A' of main breaker line side lug. Phase 'A' 50.4amps, Phase 'B' 50.3amps  
Phase 'C' 74.3 amps

## RECOMMENDATION

Replace breaker lug and breaker lug screw.

EQUIPMENT	LOCATION	DATE
Item #04165 8LA 150Amp 42CCT Pnl Main Breaker	160 Bloor Street West 8th Floor Freight Elevator	July 7, 2004



IR information	Value
Date of creation	7/7/2004
Time of creation	11:59:30 AM
Object parameter	Value
Emissivity	0.95
Object distance	1.5 m
Ambient temperature	25.0°C
Atmospheric temperature	20.0°C
Transmission	0.99
Label	Value
IR : max	77.9°C
IR : min	27.3°C
SP01	36.5°C
SP02	48.2°C
SP03	77.9°C
LI01 : max	63.4°C
LI01 : min	28.6°C
LI02 : max	71.7°C
LI02 : min	29.0°C

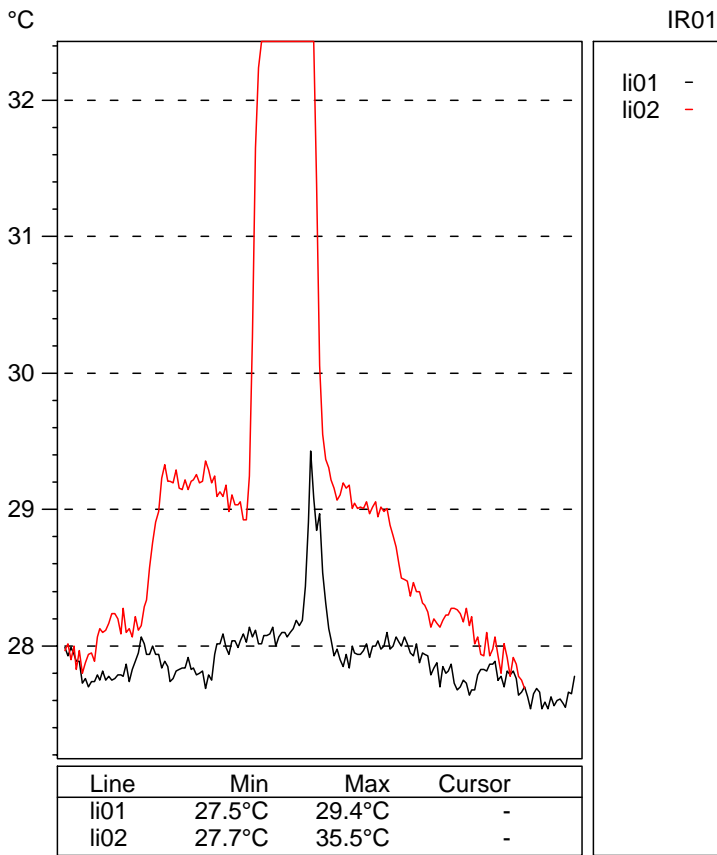
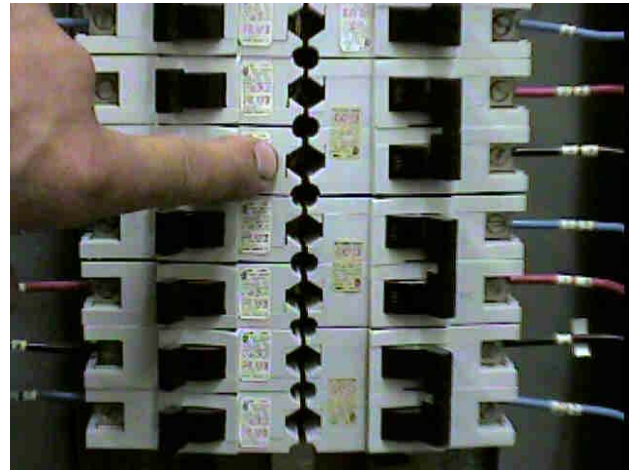
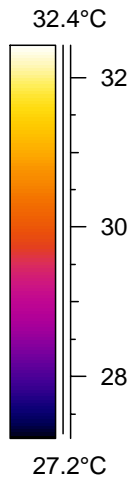
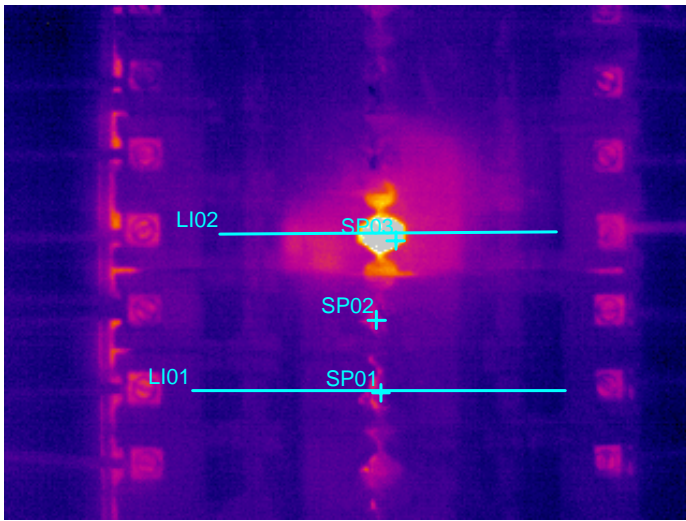
## DESCRIPTION

High heat on Phase 'A' - Phase 'A' 34.5amps, Phase 'B' 44.8amps, Phase 'C' 39.4amps

## RECOMMENDATION

Check Lug - Replace if necessary.

EQUIPMENT	LOCATION	DATE
Item # 04148 Panel 7RC 2 Pole 15Amp Breaker CCT 32/34	160 Bloor Street 7th Floor Washroom Side	July 7, 2004



IR information	Value
Date of creation	7/7/2004
Time of creation	12:58:29 PM
Object parameter	Value
Emissivity	0.95
Object distance	1.5 m
Ambient temperature	25.0°C
Atmospheric temperature	20.0°C
Transmission	0.99
Label	Value
IR : max	38.1°C
IR : min	27.1°C
SP01	28.8°C
SP02	28.8°C
SP03	37.0°C
LI01 : max	29.4°C
LI01 : min	27.5°C
LI02 : max	35.5°C
LI02 : min	27.7°C

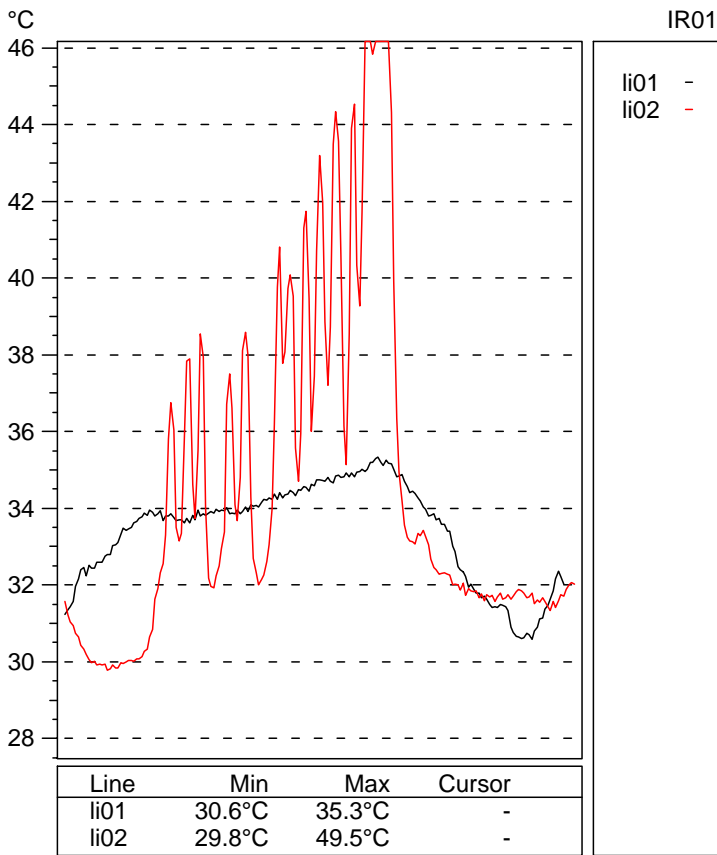
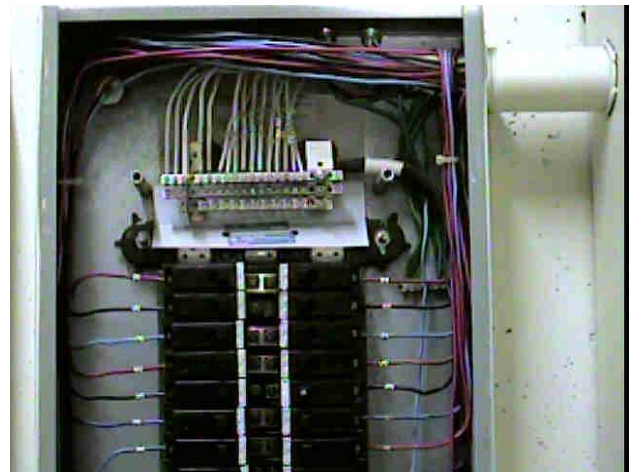
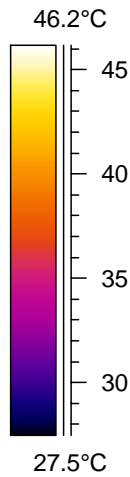
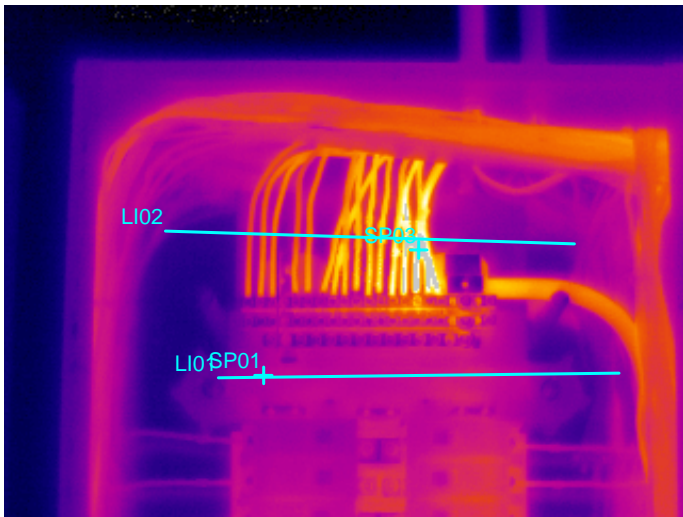
## DESCRIPTION

Loose breaker bus screw. Can not tighten. CCT 32 - 0.2 Amps CCT 34 2.7 Amps

## RECOMMENDATION

Replace breaker and check bus.

EQUIPMENT	LOCATION	DATE
Item # 4114 42 CCT 150Amp Panel	6th Floor Freight Elevator Room	July 7, 2004



IR information	Value
Date of creation	7/7/2004
Time of creation	1:07:19 PM
Object parameter	Value
Emissivity	0.95
Object distance	1.5 m
Ambient temperature	25.0°C
Atmospheric temperature	20.0°C
Transmission	0.99
Label	Value
IR : max	50.5°C
IR : min	27.4°C
SP03	49.8°C
SP01	33.3°C
LI01 : max	35.3°C
LI01 : min	30.6°C
LI02 : max	49.5°C
LI02 : min	29.8°C

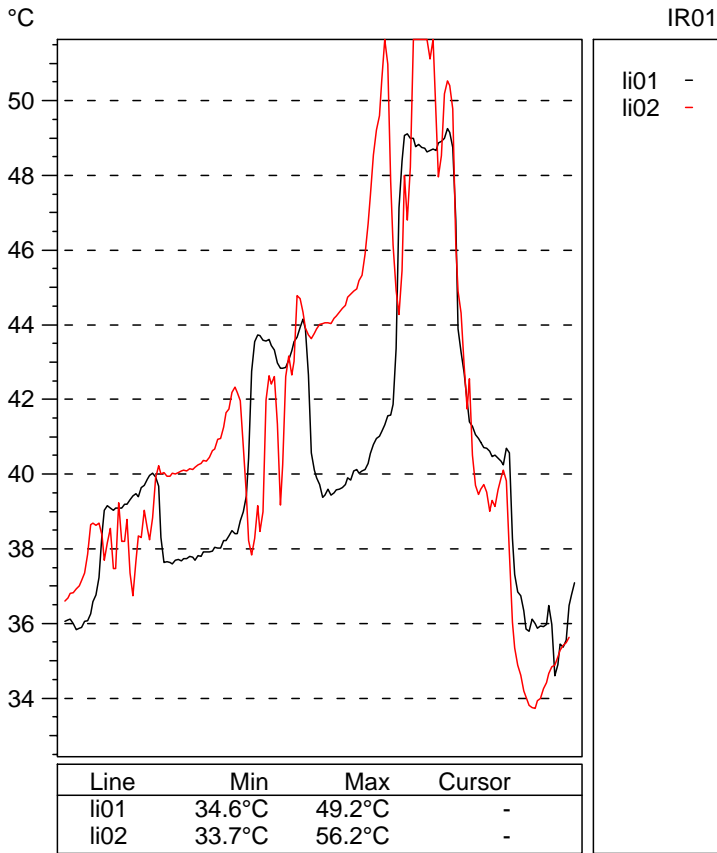
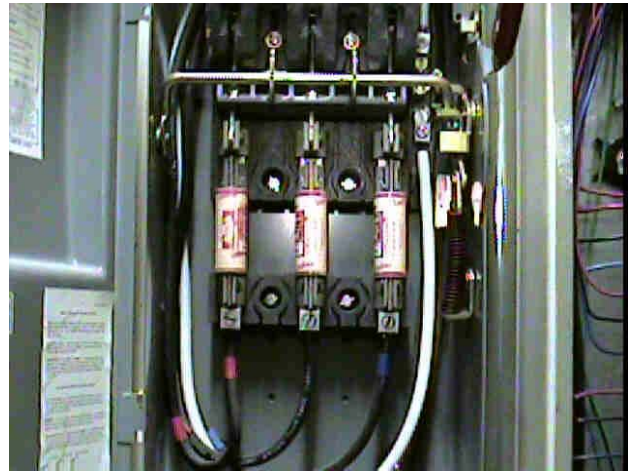
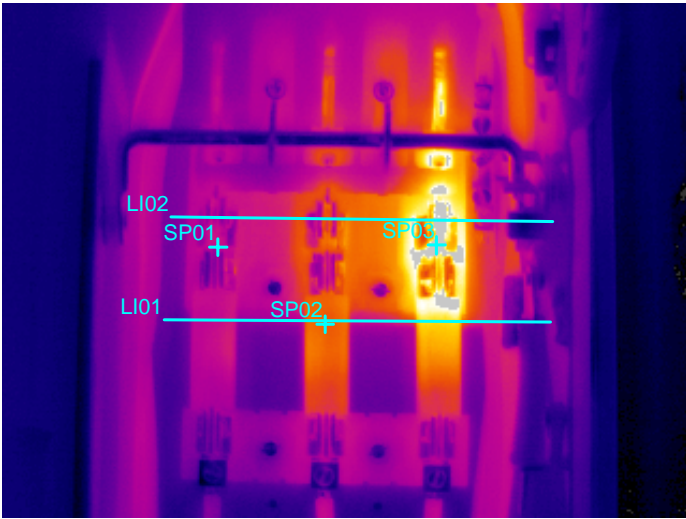
## DESCRIPTION

High heat showing in neutral wires. Phase A 56.2A Phase B 63.2A Phase 'C' 88.2A, Neutral 30.1 A.

## RECOMMENDATION

Tighten Lug - replace if necessary.

EQUIPMENT	LOCATION	DATE
Item # 4075 100Amp Fused Disconnect 4-RC	160 Bloor Street West 4th Floor Freight Elevator	July 7, 2004



IR information	Value
Date of creation	7/7/2004
Time of creation	1:23:36 PM
Object parameter	Value
Emissivity	0.95
Object distance	1.5 m
Ambient temperature	25.0°C
Atmospheric temperature	20.0°C
Transmission	0.99
Label	Value
IR : max	59.0°C
IR : min	32.2°C
SP01	39.5°C
SP02	43.2°C
SP03	57.6°C
LI01 : max	49.2°C
LI01 : min	34.6°C
LI02 : max	56.2°C
LI02 : min	33.7°C

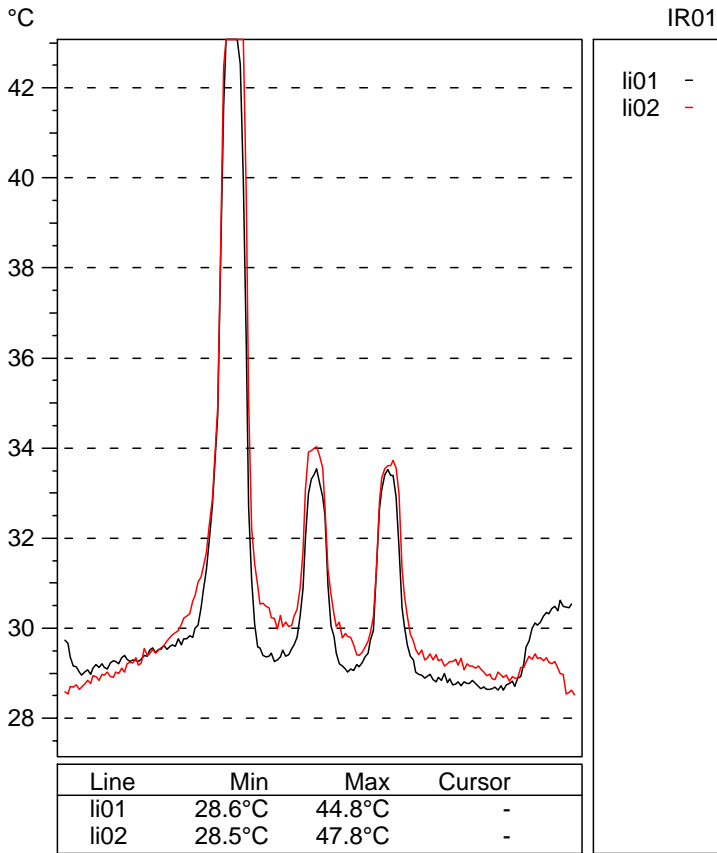
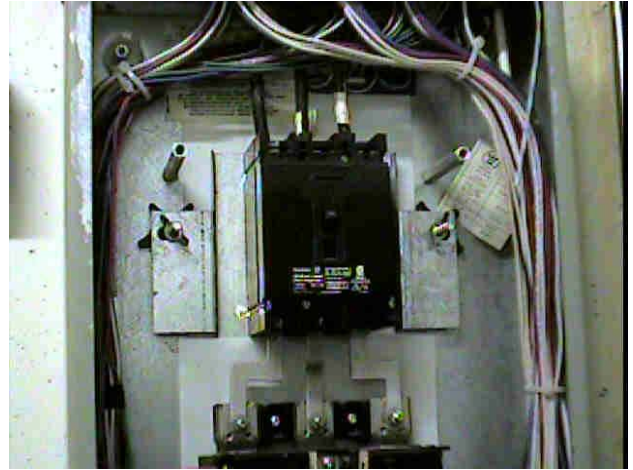
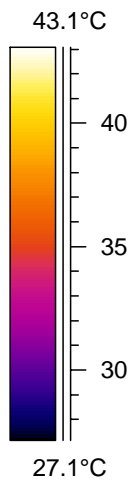
## DESCRIPTION

High Heat readings on Phase 'C' clip - Phase 'A' 32.3 amps, Phase 'B' 27.3 amps, Phase 'C' 35.6 amps

## RECOMMENDATION

Check knife blades and fuse clip - clean and tighten. Replace if necessary.

EQUIPMENT	LOCATION	DATE
Item # 4030 - 42 CCT Panel 2RB - 100A Main Breaker	160 Bloor Street West 2nd Floor Washroom	July 7, 2004



IR information	Value
Date of creation	7/7/2004
Time of creation	1:45:31 PM
Object parameter	Value
Emissivity	0.95
Object distance	1.5 m
Ambient temperature	25.0°C
Atmospheric temperature	20.0°C
Transmission	0.99
Label	Value
IR : max	48.2°C
IR : min	27.0°C
SP02	34.0°C
SP03	33.4°C
SP04	47.0°C
LI01 : max	44.8°C
LI01 : min	28.6°C
LI02 : max	47.8°C
LI02 : min	28.5°C

## DESCRIPTION

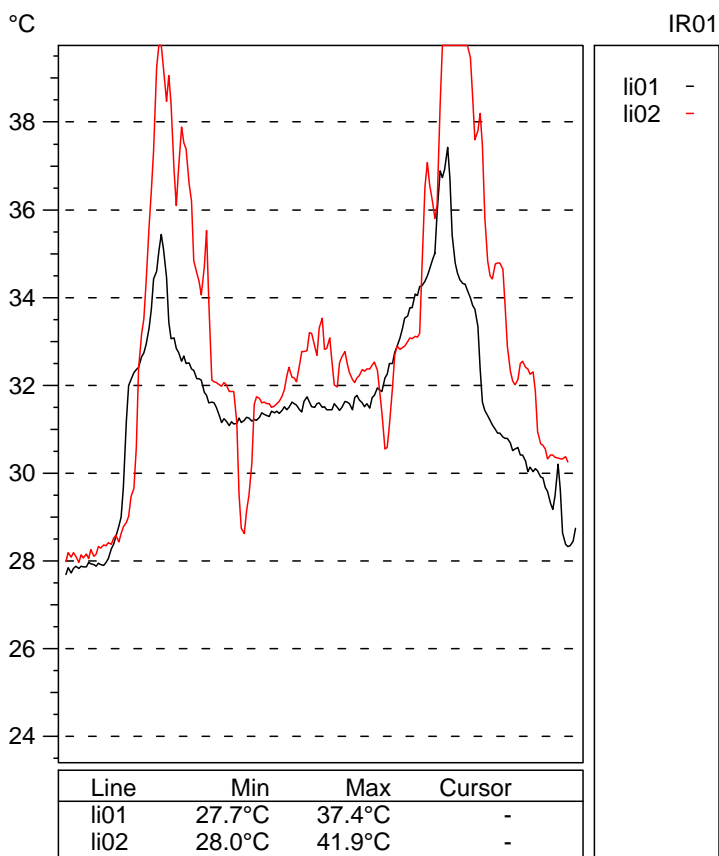
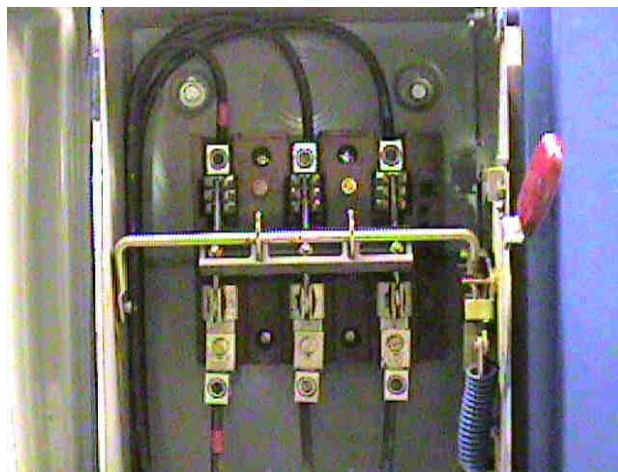
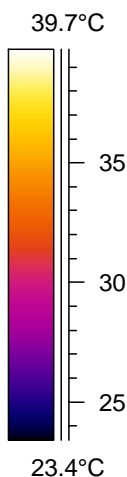
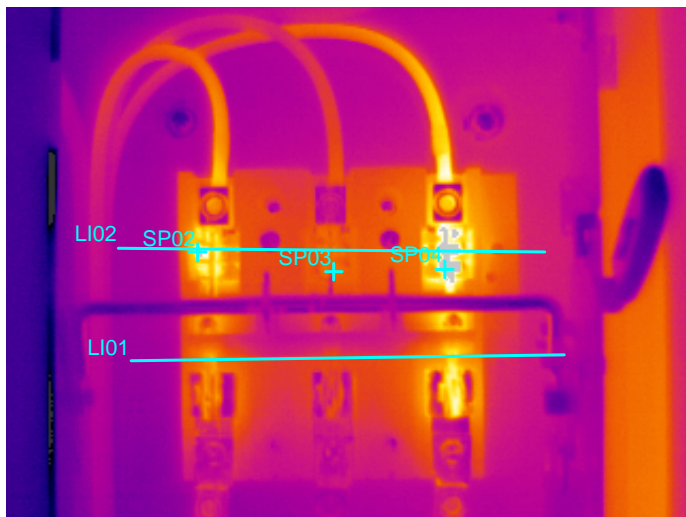
High heat in main breaker lug line side. Phase 'A' 16.7amps, Phase 'B' 2amps, Phase 'C' 7amps.

## RECOMMENDATION

Clean and tighten lug - replace if necessary.



EQUIPMENT	LOCATION	DATE
Item # 4384 200Amp N/F Disc.Elevator 7	160 Bloor Street West 17th floor Elevator Room	July 7, 2004



IR information	Value
Date of creation	7/7/2004
Time of creation	2:15:03 PM
Object parameter	Value
Emissivity	0.95
Object distance	1.5 m
Ambient temperature	25.0°C
Atmospheric temperature	20.0°C
Transmission	0.99
Label	Value
IR : max	42.3°C
IR : min	21.1°C
SP02	41.0°C
SP03	32.7°C
SP04	42.0°C
LI01 : max	37.4°C
LI01 : min	27.7°C
LI02 : max	41.9°C
LI02 : min	28.0°C

## DESCRIPTION

High heat on 'C' Phase knife blade. Phase 'A' 19Amps, Phase 'B' 19Amps, Phase 'C' 19Amps

## RECOMMENDATION

Clean and tighten blades - replace switch if necessary.